

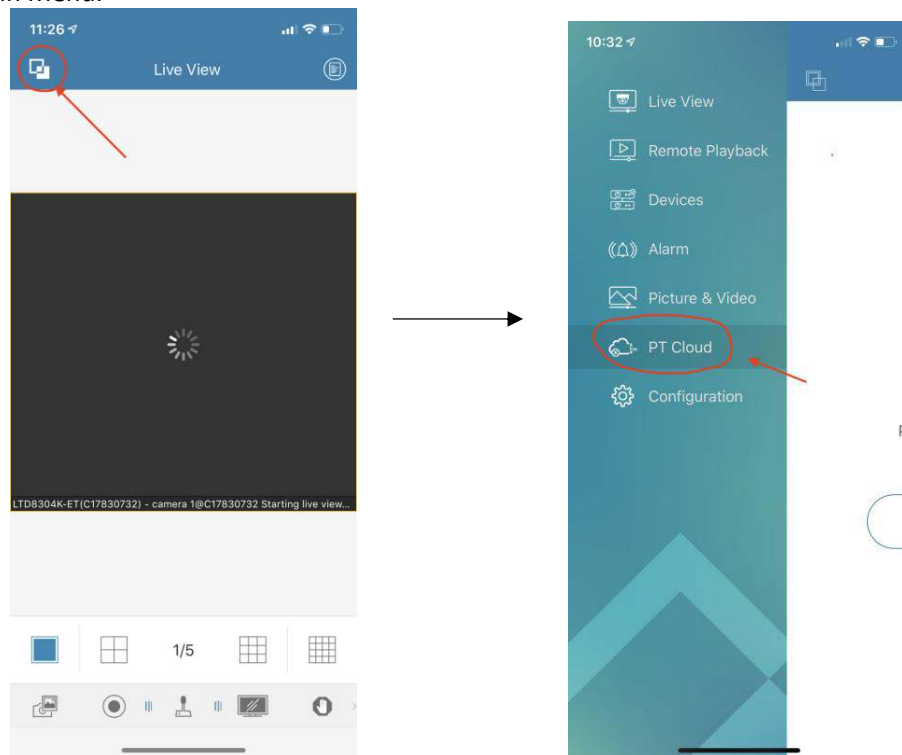


Setting up PT Cloud on NVMS7000 Smartphone App

PT Cloud is designed to enable remote viewing of DVR/NVR without configuring port forwarding on customer's router. To set up PT cloud on NVMS7000 app, PT cloud must first be enabled on local interface of DVR/NVR. If you did not do this during initial DVR configuration, then you will do that now. Go to Menu → System Configuration → Network → PT Cloud, then check "Enable" in top check box, then check "Enable Stream Encryption", and set verification code as "true9575", then click "Apply" button at bottom. Your DVR is now enabled for PT cloud.

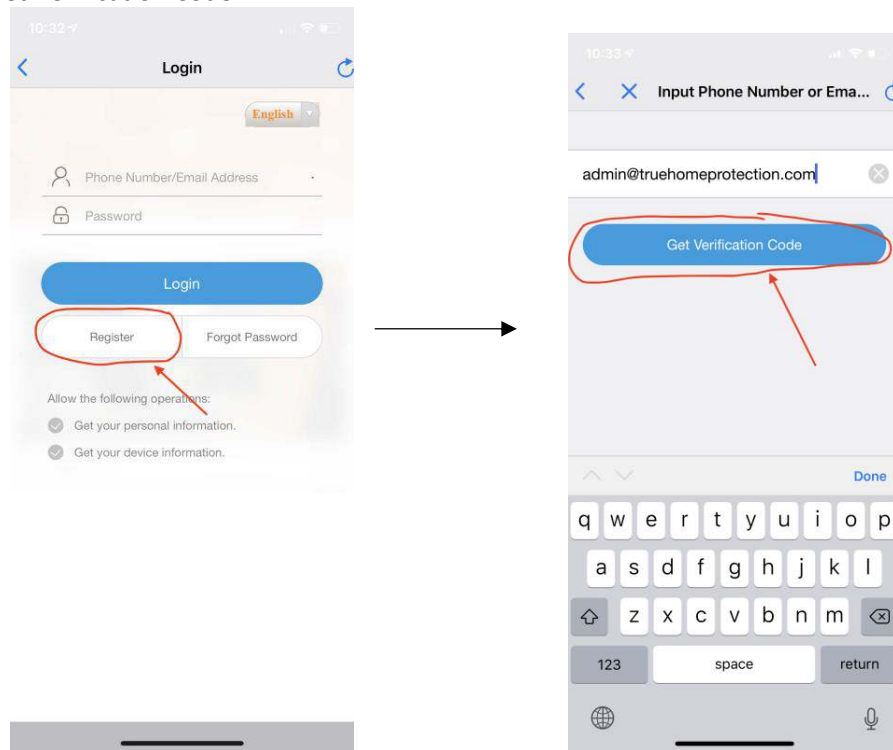
All of these steps should be completed on the CUSTOMER'S phone with their email, etc.

- 1) Download NVMS7000 app from App Store or Google Play Store.
- 2) Open NVMS7000 app, and choose region, etc. during app initial setup.
- 3) Click "Menu" icon (top left corner of screen... 2 boxes overlapping), then click on "PT Cloud" option in Menu.

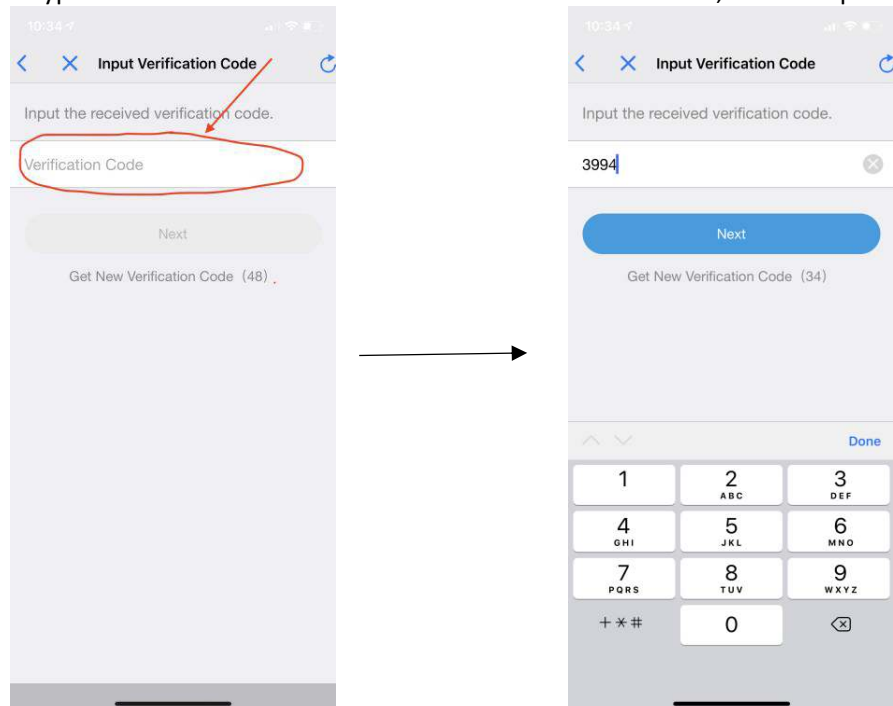




- 4) Click on the “Register” button, then have customer type in their preferred email address, then click “Get Verification Code”.

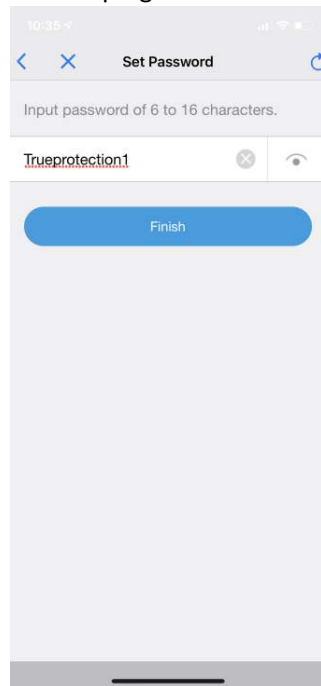


- 5) The customer will have received an email with a temporary verification code. Have the customer type this verification code into the “Verification Code” field, and then press “Next”.

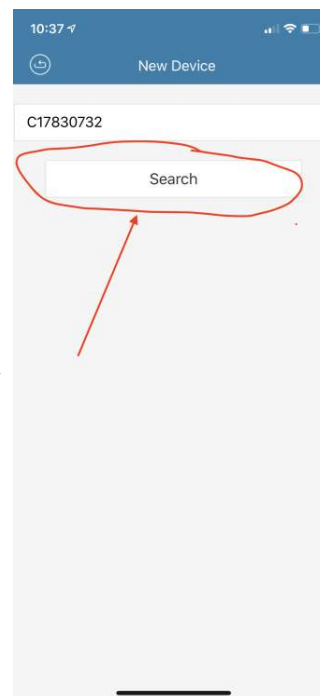
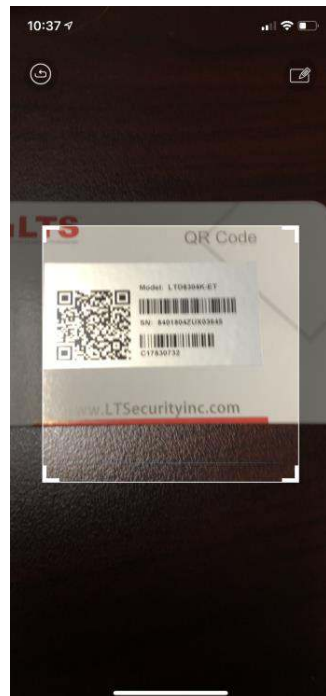




- 6) Have customer create/enter a password that they will use for PT cloud, then click “Finish” button. The customer has now registered their PT cloud account. Next, you will press the “Add” button at the top right of the screen to add the DVR to the customer’s PT Cloud account.

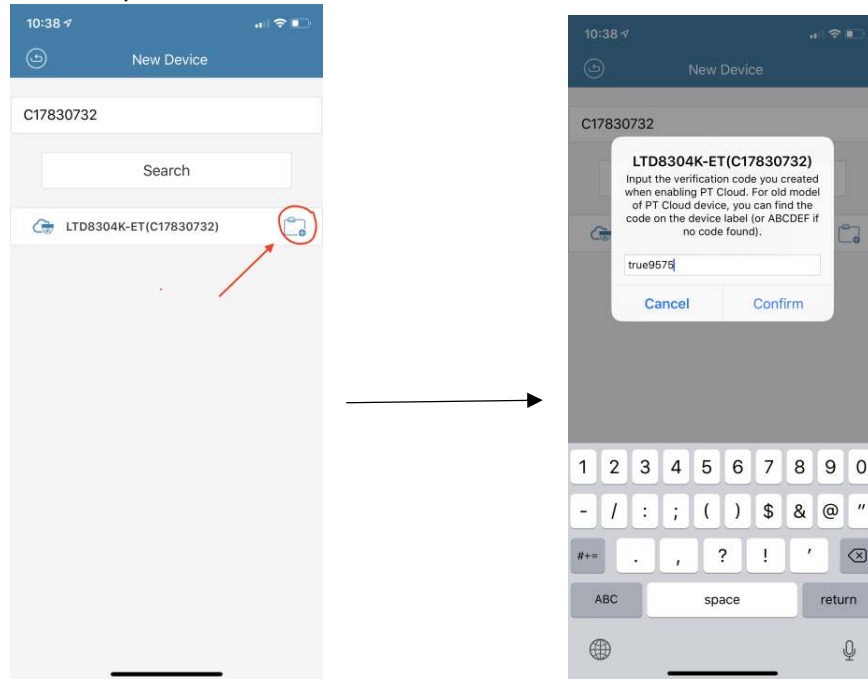


- 7) This will automatically turn on the phone’s camera function to scan a QR code. Scan the QR code from either the QR Code card that was in the packaging, or from the QR code sticker on the top of the DVR. Once the camera has scanned the QR code, click on the “Search” button on the screen.

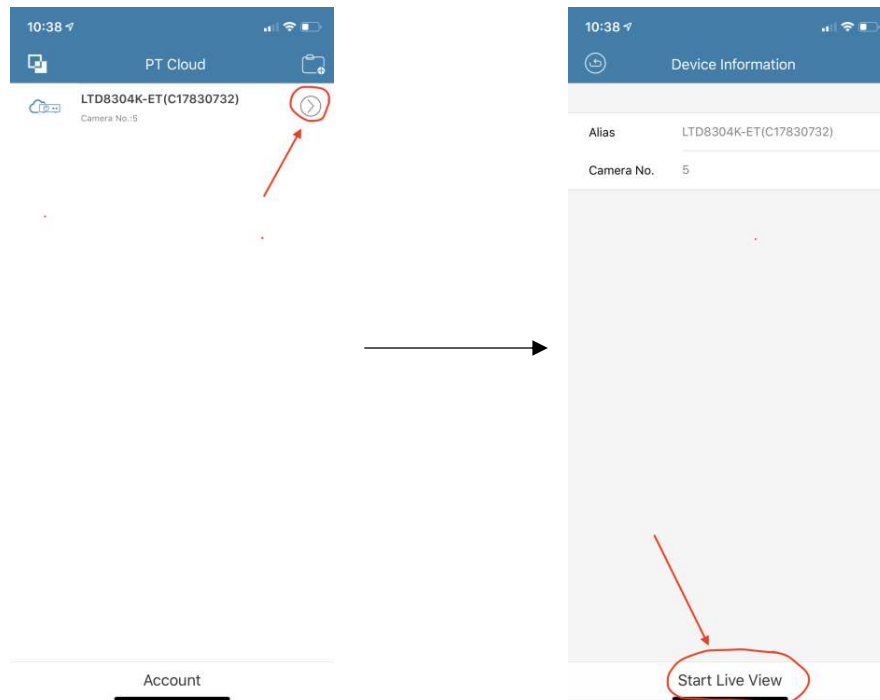




- 8) If the DVR is properly connected to the internet, then you should see the customer's DVR pop up on the screen. Click on the "Add" icon next to the DVR information as shown below. Next, type in the Video Stream Encryption Code that we set up during the local DVR configuration. As a default we always set this as "true9575".



- 9) Now that the customer's DVR has been added to their PT cloud account, click on the arrow to access that particular DVR as shown below. Next, click "Start Live View" at the bottom to view your cameras as shown below.





10) You are now all done, and the customer can view their cameras remotely from their smartphone.



Make sure that you show the customer how to change the video stream mode from Fluent to Clear so that they can see how crisp the images are in HD. Follow these steps to stream video in Clear mode:



Also, make sure that you show customer how to view recorded playback of security cameras through the app, and also make sure that you show customer how to save picture and videos from within the app, and access those pictures and videos from the menu section.

Home Security Service Locations

- [Austin Home Security](#)
- [San Antonio Home Security](#)
- [Dallas / Fort Worth Home Security](#)
- [Houston Home Security](#)
- [Atlanta Home Security](#)
- [Phoenix Home Security](#)
- [Charlotte Home Security](#)
- + More